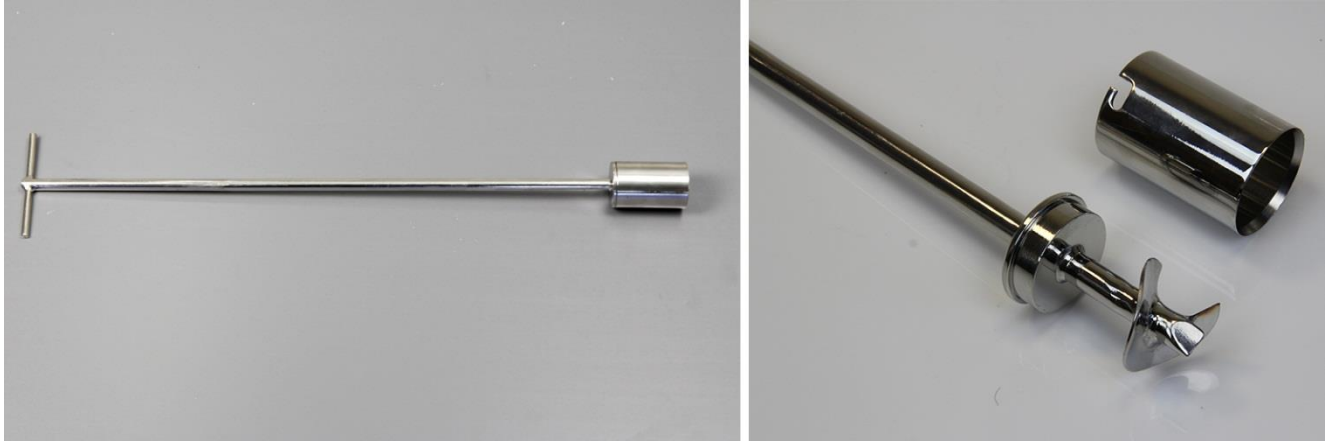


**1. Part Number:** 675 6000A550

**2. Photo:**



### 3. Product Information:

Description	Ice Sampler 550mm
Materials:	316L stainless steel
Method of Construction:	Crevice free, all welds ground and polished
Surface Finish:	Better than 0.5 microns Ra
Nominal Sample Volume:	50ml
Overall Length:	550mm
Diameter of removable Cover:	40mm
Length of removable Cover:	57mm
Nominal Weight:	550g
BSE/TSE statement:	All polishing compounds used in the manufacture of this sampler are of vegetable origin and so are BSE/TSE free.
Recommended Storage Conditions:	Dry and ambient temperature

Note: The Removable Cover and the leading edge of the scroll have been sharpened to allow the sampler to cut into products such as ice and wax. Care must be taken when handling this sampler in order to avoid injuries.

### 4. Approval:

Signed:



Name: Kuldeep Flora

Position: Quality Manager

Date: 7-Oct-20